

SAP Fieldglass Professional Services

Combining customer data and our extensive knowledge resources to help analyze and improve programs

SAP Fieldglass Datasheet

THE BEST RUN 



SAP Fieldglass professional services

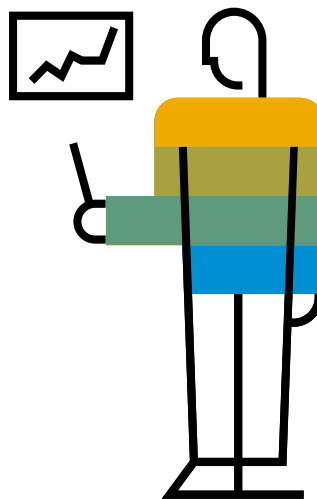
Our professional services team offers consultative, metrics-oriented support that is focused on your specific business objectives. They work directly with you and/or your specified Managed Service Provider (MSP) and Recruitment Process Outsourcers (RPO) every step of the way, offering useful analysis and insight.

We support your program regardless of how you want to structure the operation. SAP Fieldglass was built with the MSP and the RPO in mind. So you can take advantage of the vast expertise of the leading MSP and RPO providers, self-manage the program or apply any combination therein.

From implementation through day-to-day product support, we help you stay focused on establishing the proper business objectives to meet your corporate goals.

Implementation services

Our experience coupled with a proven implementation methodology, driven by your program's specific goals and objectives, ensures every SAP Fieldglass deployment follows a seamless process from start to finish. SAP Fieldglass can be configured for optimal performance within a matter of weeks, meeting aggressive deadlines. More complex scenarios involving integrations are addressed with a broader project plan and timeline.



Account services

Once you're up and running on SAP Fieldglass, the account services team delivers ongoing proactive program support.

About SAP Fieldglass

SAP Fieldglass, a longstanding leader in external talent management and services procurement, is used by organizations around the world to find, engage and manage all types of flexible resources. Our cloud-based, open platform has been deployed in more than 180 countries and helps companies transform how work gets done, increase operational agility and accelerate business outcomes in the digital economy. Backed by the resources of SAP, our customers benefit from a roadmap driven by a continuous investment in innovation.



Benchmarking

We can help establish and analyze data comparisons to other SAP Fieldglass customers to identify best practices and understand strengths and weaknesses. The following examples illustrate some of the benchmarking data points that can be captured:

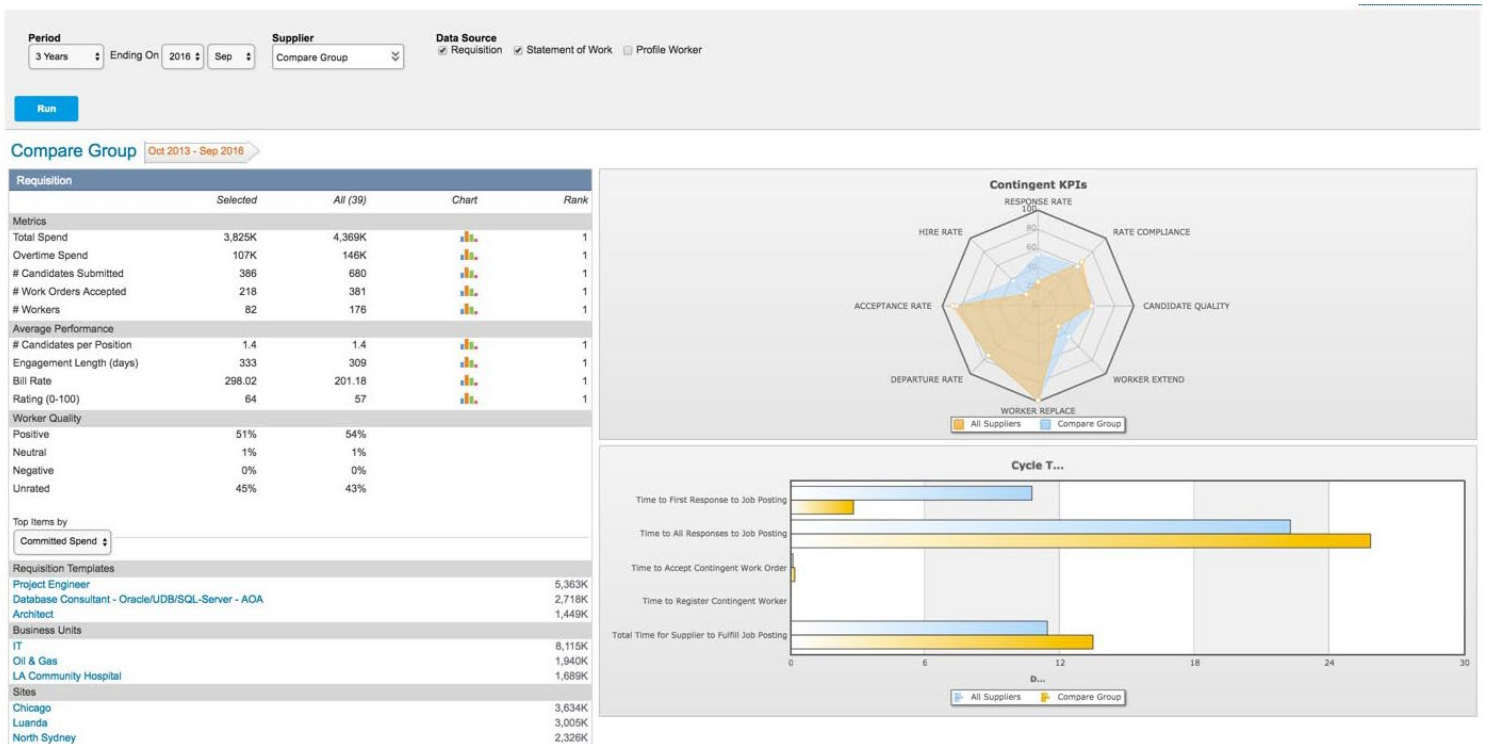
- Cost: Average rate of work orders, volume discounts, budget adherence
- Compliance: Overtime controls and co-employment
- Efficiency: Year-to-date average time to hire
- Supplier performance: Percent of job seekers submitted by the supplier that results in a work order

SAP Fieldglass reporting

Measuring and understanding the impact that human capital has on your organization is critical in driving business success. SAP Fieldglass' reporting and analytics capabilities help you extract data to determine business benefits and areas needing improvement.

SAP Fieldglass offers several key reports:

- Standard reports: A robust suite of out-of-the-box reports that include information for supplier and worker performance, spend, status – job postings, invoice, expense sheets, etc. – and summary data.
- Ad hoc reports: A series of permission-based reports based on user-defined criteria.
- Real-time and scheduled reporting: SAP Fieldglass can create and publish real-time and scheduled reports on behalf of our customers. Reports can be generated from data associated with the Time Sheet, Expense Sheet, Worker and Invoice modules. Monitor specific situations, help make on-the-fly decisions and email results to specified personnel.



SAP Fieldglass Visualizer

SAP Fieldglass Visualizer is a premium service offering that provides a unique graphical and interactive analysis of your worker data. A series of visuals display the analysis extracted from your underlying datasets so you can proactively detect emerging trends and outliers. It includes drill-down capabilities to view the supporting data elements.

By leveraging the analytics produced by the SAP Fieldglass application, Visualizer provides an aggregated workforce view that allows managers to balance resource availability against required skills, open requisitions and current projects. It visually represents advanced supplier benchmarks of a given supplier Key Performance Indicator (KPI) against the average supplier or target KPIs. Similarly, SAP Fieldglass Visualizer offers a series of interactive charts that help you identify trends, patterns, and anomalies in your workforce that may require action or follow up.

Learn more

The world of work is changing, and SAP Fieldglass is leading the way with innovative solutions that harness the power of the external workforce in driving the digital economy. Explore additional resources on www.fieldglass.com/resources to learn more about the external workforce and the way work gets done.

Follow us



www.fieldglass.com/contact

© 2019 SAP SE or an SAP affiliate company. All rights reserved.

No part of this publication may be reproduced or transmitted in any form or for any purpose without the express permission of SAP SE or an SAP affiliate company.

The information contained herein may be changed without prior notice. Some software products marketed by SAP SE and its distributors contain proprietary software components of other software vendors. National product specifications may vary.

These materials are provided by SAP SE or an SAP affiliate company for informational purposes only, without representation or warranty of any kind, and SAP or its affiliated companies shall not be liable for errors or omissions with respect to the materials. The only warranties for SAP or SAP affiliate company products and services are those that are set forth in the express warranty statements accompanying such products and services, if any. Nothing herein should be construed as constituting an additional warranty.

In particular, SAP SE or its affiliated companies have no obligation to pursue any course of business outlined in this document or any related presentation, or to develop or release any functionality mentioned therein. This document, or any related presentation, and SAP SE's or its affiliated companies' strategy and possible future developments, products, and/or platforms, directions, and functionality are all subject to change and may be changed by SAP SE or its affiliated companies at any time for any reason without notice. The information in this document is not a commitment, promise, or legal obligation to deliver any material, code, or functionality. All forward-looking statements are subject to various risks and uncertainties that could cause actual results to differ materially from expectations. Readers are cautioned not to place undue reliance on these forward-looking statements, and they should not be relied upon in making purchasing decisions.

SAP and other SAP products and services mentioned herein as well as their respective logos are trademarks or registered trademarks of SAP SE (or an SAP affiliate company) in Germany and other countries. All other product and service names mentioned are the trademarks of their respective companies.

See www.sap.com/copyright for additional trademark information and notices.